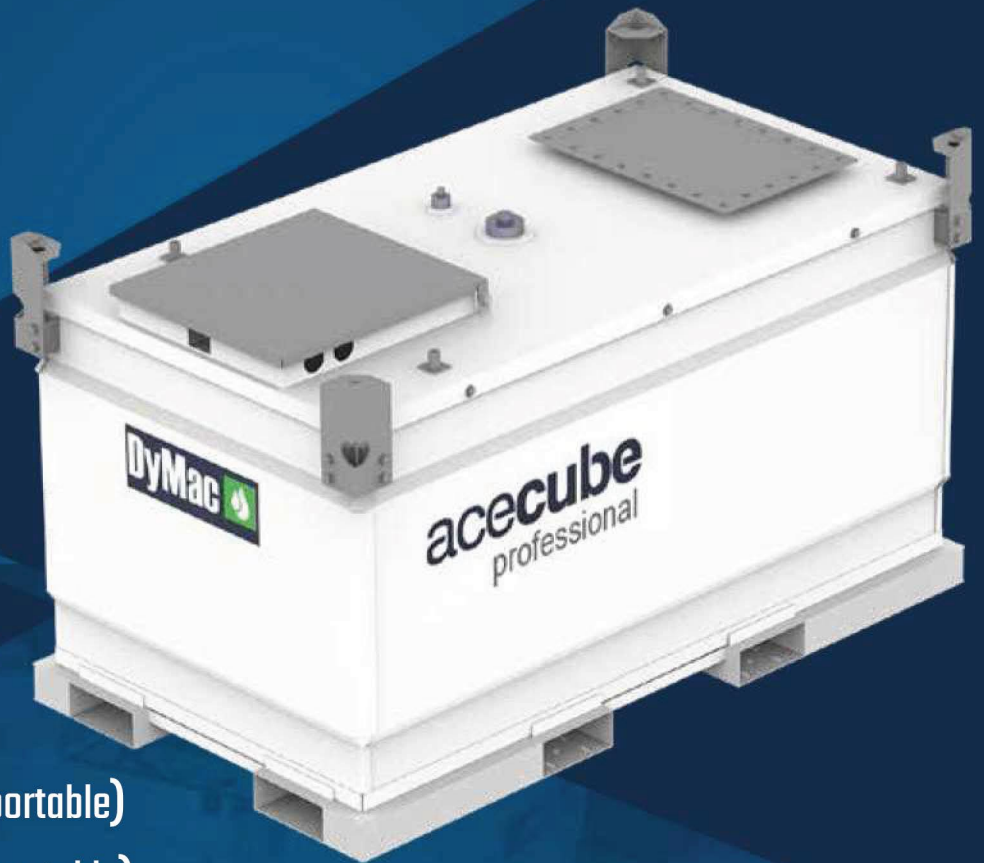




The AceCube Professional tank range is a transportable style cube tank.



Available Sizes

- ✓ ACP-500L / 132G (Transportable)
- ✓ ACP-950L / 250G (Transportable)
- ✓ ACP-2000L / 528G (Transportable)
- ✓ ACP-3000L / 792G (Transportable)
- ✓ ACP-4500L / 1188G (Stationary)
- ✓ ACP-5300L / 1400G (Stationary)

acecube
professional



acecube

professional

Enhanced Design Features

Unique Design Standard

The AceCube Professional Tank comes complete with stacking corners. The innovative design allows the primary hatch lid to open up to a conveniently positioned component ports plate with access to an extra large equipment compartment area. The ACP range has been fitted with a secondary plate as standard opening it up to allow the fitting of a secondary sump tank to carry Ad-blue / DEF.

Maintenance & Environment

To ensure efficient and unencumbered cleaning, maintenance and inspection the ingenious three tier component design allows the inner tank to be completely removed and disconnected. This flexible design ensures a minimal amount of downtime and thus increases over long term ROI.

Stacking & Racking

All AceCube professional tank designs are "stackable and rackable" into 40ft shipping containers for worldwide transport. They are also stackable 2 high when empty and 1 high when full.

Dispensing & Accessibility

The AceCube professional tank range comes equipped with a spacious equipment chamber which engages a bespoke universal bracket system that can support retractable hose reels, along with a variety of pumps, dispensing kits, electric and rotary hand pumps.

Transportable & Portable

The AceCube Professional IBC bundled fuel storage tank range is a transportable cube style tank and is used for fuelling in a permanent position and should be transposed and lifted when empty only.



Truly Versatile

Take a look inside

The AceCube Professional tank range boasts a bi-directional forklift pocket design and comes with internal baffle plates for protection against sloshing when transporting. The range has a fully removable inner tank allowing easy access during routine maintenance it comes with stacking corners that double up as lifting lugs providing total ease of maneuverability. There are conveniently positioned ports & fittings underneath the primary hatch lid that also opens up to an extra-large equipment compartment area.



Superior Features



Multiple ports that can connect upto three pieces of machinery at one time and allow dispensing simultaneously.



Automatic Dispensing Nozzle with 4M or 8ft hose and various electric pump size options.



Galvanized stacking corner doubles up as a lifting bracket.

Optional Accessories



K2 Rotary hand pump with 4m or 8ft hose and dispensing nozzle.



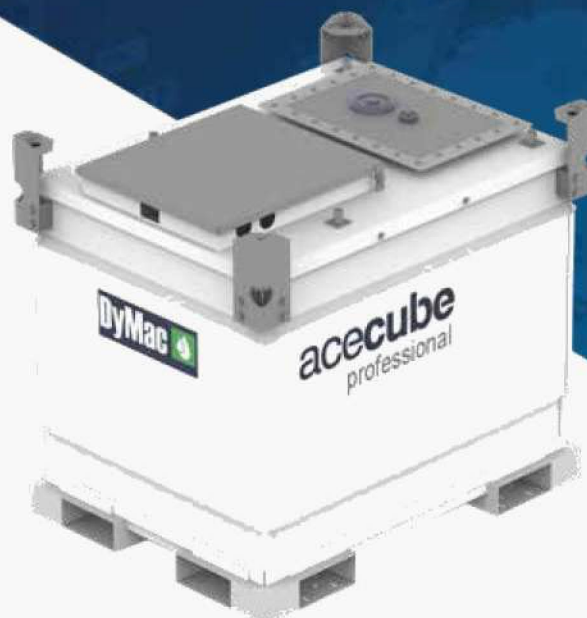
Can accommodate upto 10M or 40ft retractable hose reel mounted in the bundled equipment area.



Combined 10M / 32ft retractable hose reel option with Automatic Dispensing nozzle

Model (ACP-950L/250G)

The AceCube Professional model ACP-950L / 250G is designed for the safe and secure transporting and storage of various industrial lubricants and hazardous liquids worldwide.



Specifications

	Metric	US	Imperial
Capacity	950 Litres	251 Gallons	201 Gallons
Length	1485 mm	58"	58"
Width	1150 mm	45 4/16"	45 4/16"
Height	1285 mm	50 19/32"	50 19/32"
Outer Tank Thickness	3 mm	11 Gauge	11 Gauge
Inner Tank Thickness	mm	11 Gauge	11 Gauge
Weight, Tare	483 kg	1075 lbs	1075 lbs
Weight, Laden	1223 kg	2707 lbs	2707 lbs
Safe Fuel Fill Level	870 Litres	230 Gallons	191 Gallons

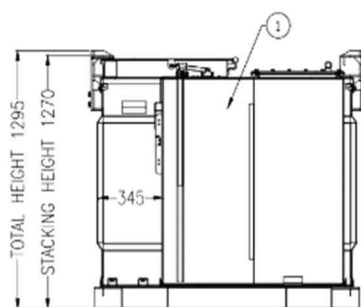
Approvals and Certifications

UK & Europe

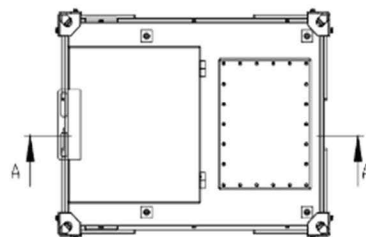
- ✓ UN31A/Y Compliant Design
- ✓ UL142 Compliant Design
- ✓ Pressure Tested
- ✓ UN31A/Y
- ✓ Adhering to ADR regulations

USA & Canada

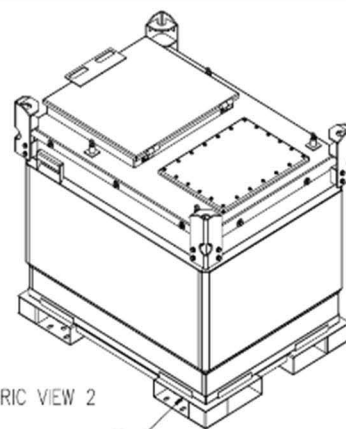
- ✓ UN31A/Y Compliant Design
- ✓ UL142 Compliant Design
- ✓ Pressure Tested
- ✓ UN31A/Y
- DOT Canada



SECTION A-A



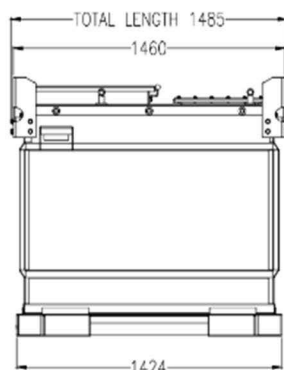
PLAN VIEW



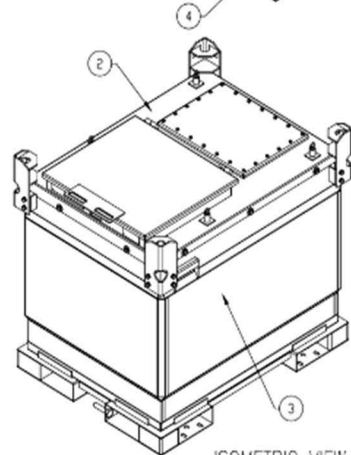
ISOMETRIC VIEW 2



FRONT ELEVATION



SIDE ELEVATION



ISOMETRIC VIEW 1

The range has an extra large equipment compartment area than can house a variety of accessories.



DISPENSING NOZZLE VARIATIONS



HOSES WITH ISO QUICK RELEASE COUPLERS



UP TO 10M OR 32FT RETRACTABLE HOSE REELS



DIGITAL FLOW METERS



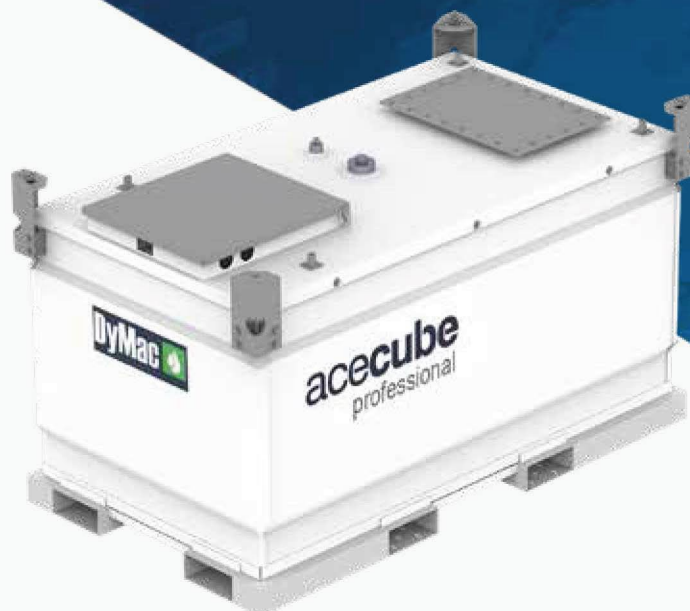
ENGINE DRIVEN OR ELECTRIC PUMPS



IN LINE PARTIAL SEPARATION FILTERS

Model (ACP-2000L/528G)

The AceCube Professional model ACP-2000L / 528G is designed for the safe and secure transporting and storage of various industrial lubricants and hazardous liquids worldwide.



Specifications

	Metric	US	Imperial
Capacity	1980 Litres	523 Gallons	435 Gallons
Length	2300 mm	90"	90"
Width	1325 mm	52 11/64"	52 11/64"
Height	1295 mm	50 3/4"	50 3/4"
Outer Tank Thickness	3 mm	11 Gauge	11 Gauge
Inner Tank Thickness	4 mm	11 Gauge	11 Gauge
Weight, Tare	736 kg	1612 lbs	1612 lbs
Weight, Laden	2335 kg	5147 lbs	5147 lbs
Safe Fuel Fill Level	1880 Litres	497 Gallons	414 Gallons

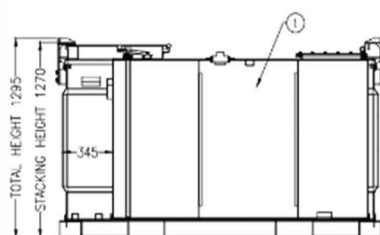
Approvals and Certifications

UK & Europe

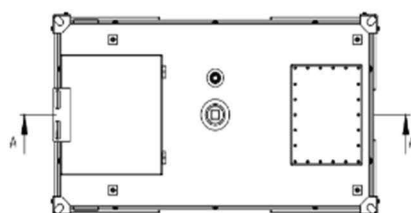
- ✓ UN31A/Y Compliant Design
- ✓ UL142 Compliant Design
- ✓ Pressure Tested
- ✓ UN31A/Y
- ✓ Adhering to ADR regulations

USA & Canada

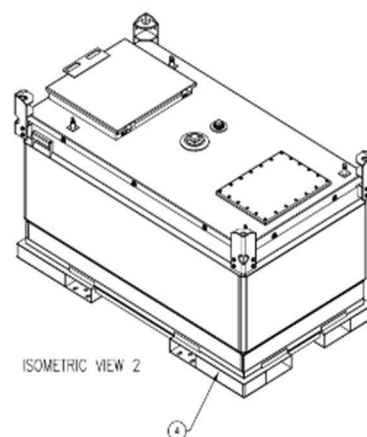
- ✓ UN31A/Y Compliant Design
- ✓ UL142 Compliant Design
- ✓ Pressure Tested
- ✓ UN31A/Y
- ✓ DOT Canada



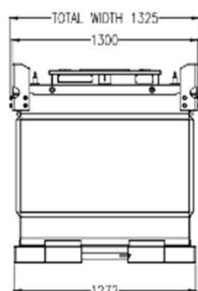
SECTION A-A



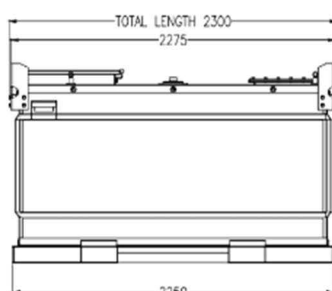
PLAN VIEW



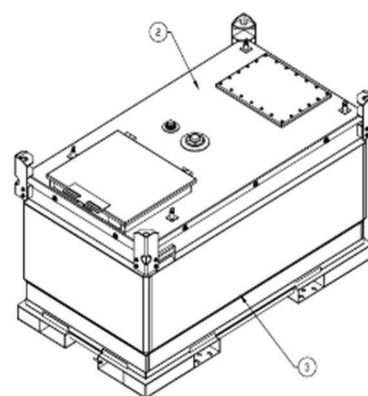
ISOMETRIC VIEW 2



FRONT ELEVATION



SIDE ELEVATION



ISOMETRIC VIEW 1

The range has an extra large equipment compartment area than can house a variety of accessories.



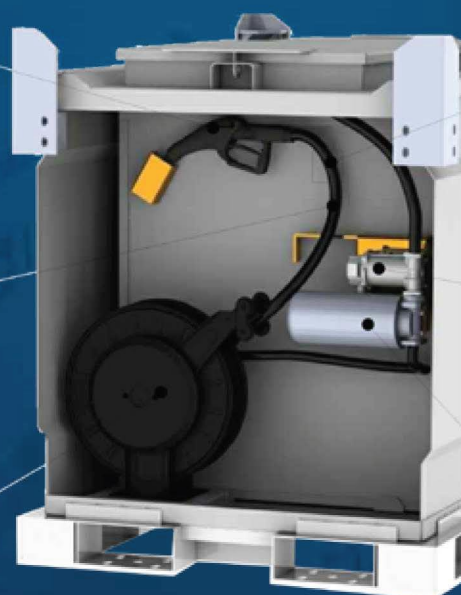
DISPENSING NOZZLE VARIATIONS



HOSES WITH ISO QUICK RELEASE COUPLERS



UP TO 10M OR 32FT RETRACTABLE HOSE REELS



DIGITAL FLOW METERS



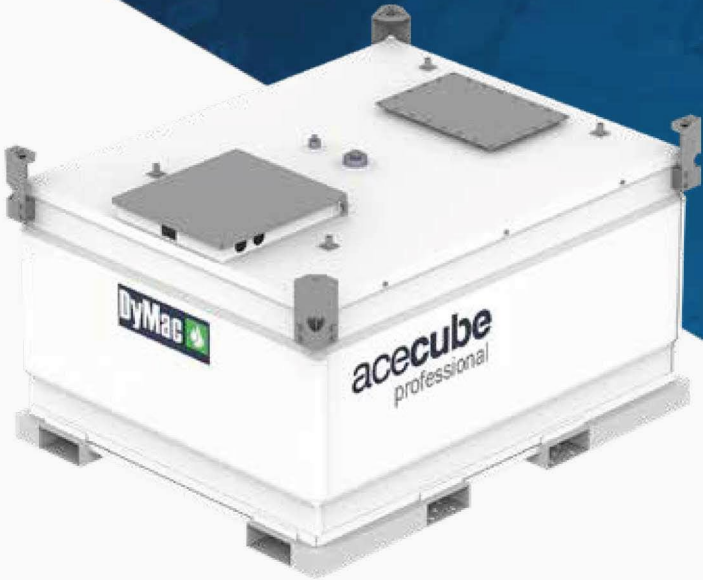
ENGINE DRIVEN OR ELECTRIC PUMPS



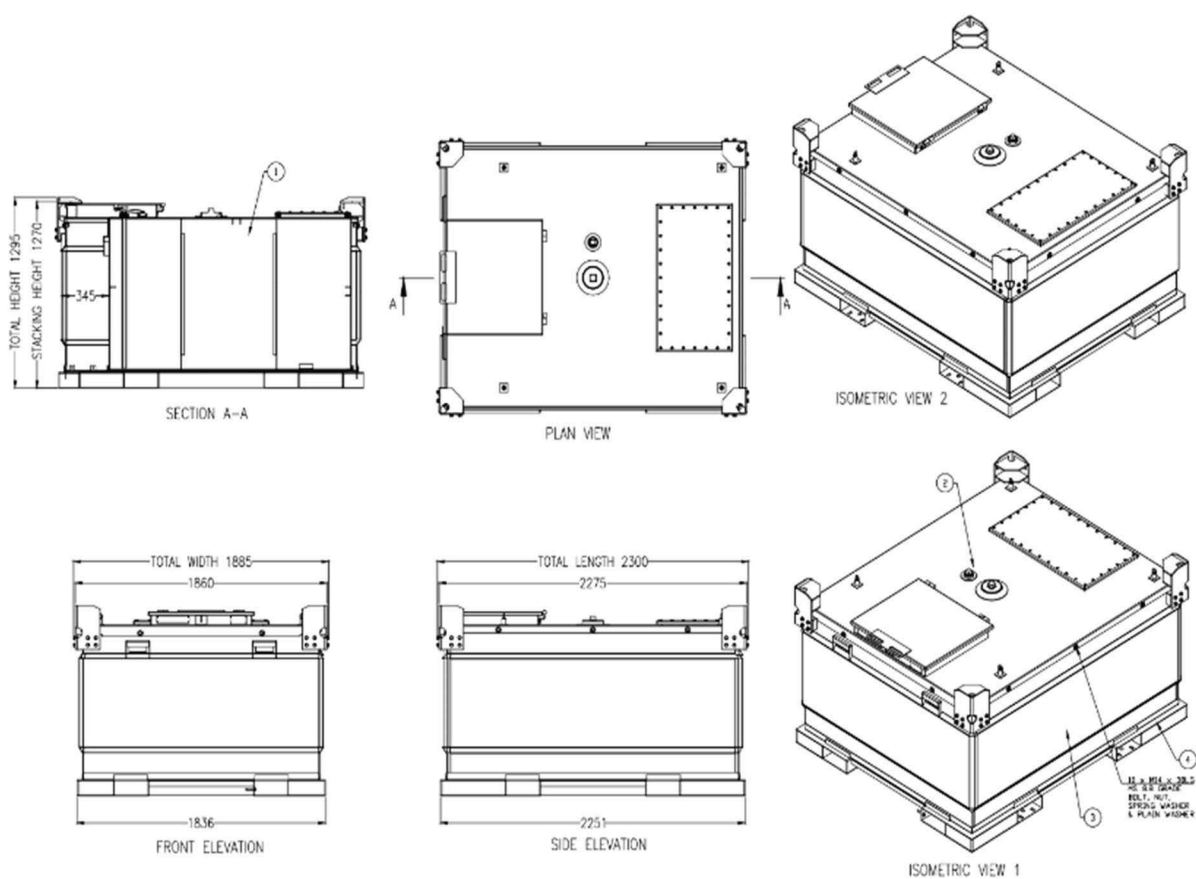
IN LINE PARTIAL SEPARATION FILTERS

Model (ACP-3000L/792G)

The AceCube Professional model ACV-3000L / 792G is designed for the safe and secure transporting and storage of various industrial lubricants and hazardous liquids worldwide.



Specifications	Metric	US	Imperial
Capacity	3008 Litres	795 Gallons	662 Gallons
Length	2300 mm	90"	90"
Width	1885 mm	74"	74"
Height	1295 mm	50"	50"
Outer Tank Thickness	3 mm	11 Gauge	11 Gauge
Inner Tank Thickness	4 mm	11 Gauge	11 Gauge
Weight, Tare	952 kg	2067 lbs	1721 lbs
Weight, Laden	3381 kg	7453lbs	7453 lbs
Safe Fuel Fill Level	2858 Litres	755 Gallons	629 Gallons
Approvals and Certifications			
UK & Europe		USA & Canada	
✓ UL142 Compliant Design		✓ UL142 Compliant Design	
✓ ULCS60I Compliant Design		✓ ULCS60I Compliant Design	
✓ Pressure Tested		✓ Pressure Tested	
✓ UN31A/Y		✓ UN31A/Y	
✓ Adhering to ADR regulations		✓ DOT Canada	



The range has an extra large equipment compartment area than can house a variety of accessories.

