



# DC PUMPS BP 3000 - BP 3000 INLINE

**EN.** Fuel vane pumps.  
Powerful, dependable and economical, they are available with 12 and 24-volt direct current motors.  
Thanks to their compact sizes, these pumps are used as the primary system in earthmoving machinery.

**ES.** Bombas de paletas para transferencia.  
Potentes, fiables y económicas, están disponibles con motor 12V y 24V de corriente continua.

Por su estructura compacta, estas bombas son usadas como sistema primario and maquinaria de mover tierra.

**PT.** Bombas de palhetas para transferência.  
Potentes, fiáveis e económicas, estão disponíveis com motor de corrente contínua 12 e 24 Volts.

Por serem compactas, estas bombas são usadas como primeiro sistema em máquinas de terraplanagem.

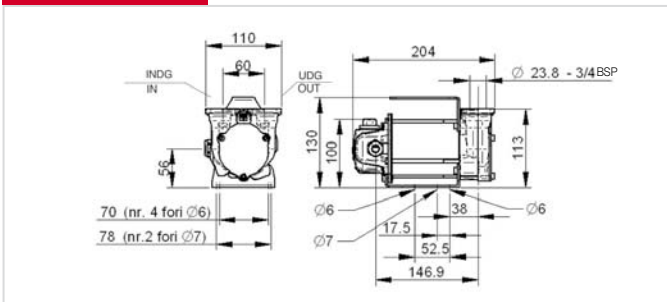
## PERFORMANCE

- Vane pump with rotor.
- By-pass valve incorporated into the pump body.
- Duty cycle 30 min.
- Flow rate up to 50 l/min
- Noise level below 70 dB
- 12 - 24 V DC operation

- Bomba de paletas con rotor
- Válvula de bypass incorporada
- Ciclo de funcionamiento de 30 minutos
- Caudal de hasta 50 l/min
- Nivel de ruido inferior a 70 dB
- Funcionamiento 12V - 24V CC

- Bomba de palhetas com rotor.
- Válvula de by pass incorporada no corpo da bomba.
- Ciclo de trabalho 30 min.
- Caudal até 50 l/min
- Ruído inferior a 70 dB
- Funcionamento 12 - 24 V DC

## DIMENSIONS



## GUARANTEE



**Guaranteed IP55 protection**  
Prevents water and dust entering the motor.



**EMC Test**  
No interference with power circuits.



**Vibration Test**  
Able to resist high vibrations.

## PRODUCTS' RANGE WEIGHT AND PACKAGING

| Code             | Weight |     | Packaging   |             |         |
|------------------|--------|-----|-------------|-------------|---------|
|                  | kg     | lbs | mm          | inch        | pcs/box |
| <b>F00342000</b> | 3,5    | 7,9 | 200x120x140 | 7,9x4,7x5,5 | 1       |
| <b>F00347000</b> | 3,5    | 7,9 | 200x120x140 | 7,9x4,7x5,5 | 1       |
| <b>F00357500</b> | 3,5    | 7,9 | 200x120x140 | 7,9x4,7x5,5 | 1       |
| <b>F00358500</b> | 3,5    | 7,9 | 200x120x140 | 7,9x4,7x5,5 | 1       |



**REGISTERED DESIGN**

Flow-rate

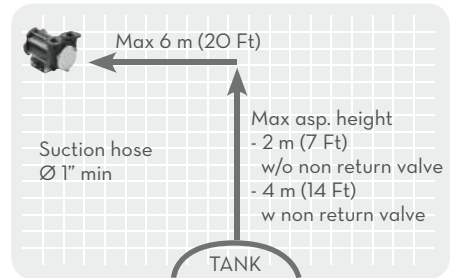
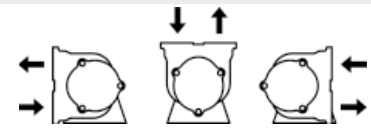
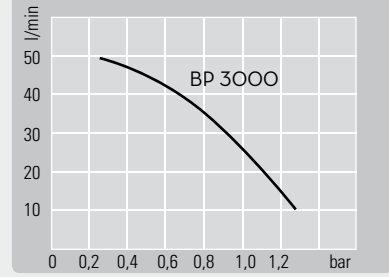
up to  
**50** l/min  
(up to 13 gpm)



BP 3000 - PORTS NOT THREADED



BP 3000 INLINE - THREADED PORTS



ON REQUEST

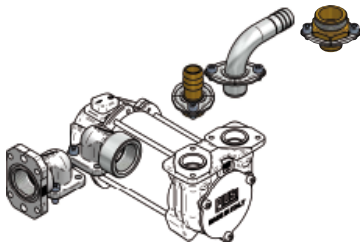


- KIT terminal box + 2mt cable + fuse 25A with clamp BP3000 12V - Code F16293000
- KIT terminal box + 4mt cable + fuse 25A with clamp BP3000 12V - Code F16295000
- KIT terminal box + 2mt cable + fuse 15A with clamp BP3000 24V - Code F16294000
- KIT terminal box + 4mt cable + fuse 15A with clamp BP3000 24V - Code F16296000



Terminal box  
Code F1601100A

BP 3000 VERTICAL PORTS ONLY



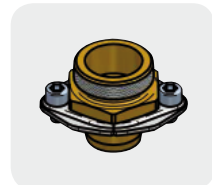
Kit straight hose tail 3/4":  
Code F16172000  
(No.02 pcs)  
1": Code F17124000  
(No.02 pcs)



90° hose tail  
3/4": Code F16173000  
(No.01 pcs)  
1": Code F17262000  
(No.01 pcs)



Flanged elbow  
Code F16178000  
(No.01 pcs)  
Elbow  
Code F16770000  
(No.01 pcs)



Flanged adaptor  
(No.01 pcs)  
1" BSP F: F16799000  
3/4" BSP F: F17314000  
1" BSP M: F17313000

PRODUCTS' RANGE TECHNICAL DATA

| Code      | Description             | Fluids<br>type | Flow-rate |      | Voltage |               |              | rpm       | Duty cycle<br>min. | Max working<br>pressure<br>bar. |
|-----------|-------------------------|----------------|-----------|------|---------|---------------|--------------|-----------|--------------------|---------------------------------|
|           |                         |                | l/min     | gpm  | DC Volt | Power<br>Watt | Amp.<br>max. |           |                    |                                 |
| F00342000 | BP3000 12V              | D              | 50        | 13   | 12      | 300           | 24           | 2900      | 30                 | 1,5                             |
| F00347000 | BP3000 24V / 12V        | D              | 50/30     | 13/6 | 24/12   | 310/80        | 13/6,5       | 2900/1500 | 30                 | 1,5                             |
| F00357500 | BP3000 INLINE 12V       | D              | 50        | 13   | 12      | 300           | 24           | 2900      | 30                 | 1,5                             |
| F00358500 | BP3000 INLINE 24V / 12V | D              | 50/30     | 13/6 | 24/12   | 310/80        | 13/6,5       | 2900/1500 | 30                 | 1,5                             |