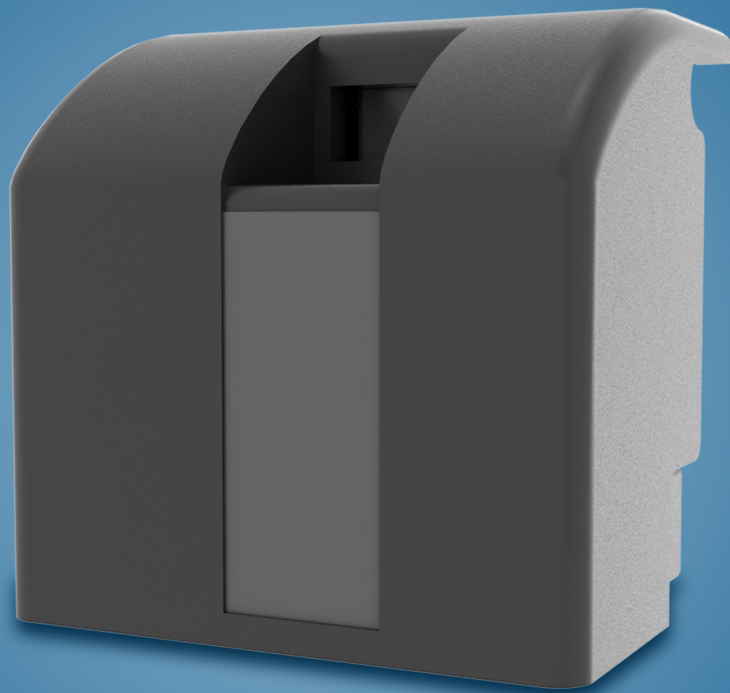




THE DPT MINI CAT 5 SYSTEM



PRODUCT OVERVIEW

The Mini CAT 5 system by DPT can be applied at installations where a short disconnection of the water network is required or is mandatory.

The most important reason to use a disconnection tank is to prevent the contamination of the water supply by the presence of substances in the event of back-flow of the water.

This includes slaughterhouses, mortuaries, dentists, irrigation, laboratories, drinking water trays livestock, car washes, laundries etc. But break tanks are also used in systems with stagnant water such as sprinkler systems, extinguishing water, etc.

Even in places where they add substances to the water, such as antibiotics, one is obliged to place a disconnection tank between the drinking water supply and the indoor installation.

The Mini CAT 5 system is in reality used in water systems with a relatively low required flow level or where there is little free space available. Examples of these installations are in laboratories, dental practices, etc.

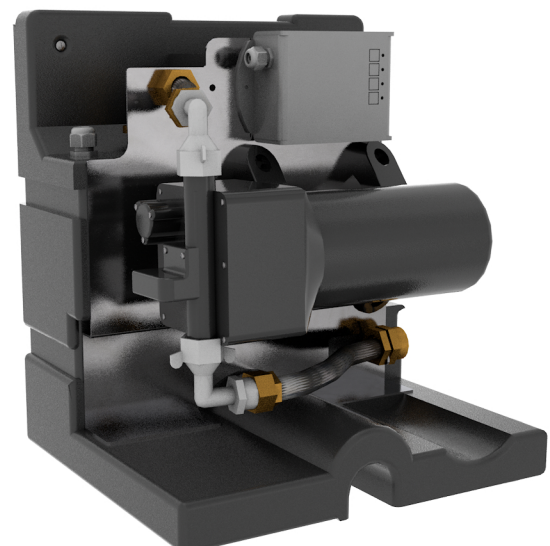
The Mini CAT 5 system by DPT consists out of a very small tank with a volume of 8 litres. The drinking water connection is located on the side of the unit and is conform to EN1717.

This connection is Belgaqua and KIWA certified. The tank is equipped with a floater which makes sure that there is enough water in the tank. A prefab diaphragm pump is installed before the tank. This pump makes sure that the secondary water network has enough pressure. Everything is prefab installed and is removable for quick maintenance and service.

The entire pump and break tank are covered by a stylish sound isolating foam cover. The system can be installed in a kitchen cabinet. The Mini CAT 5 system by DPT is delivered including the complete installation set and pressure tank.

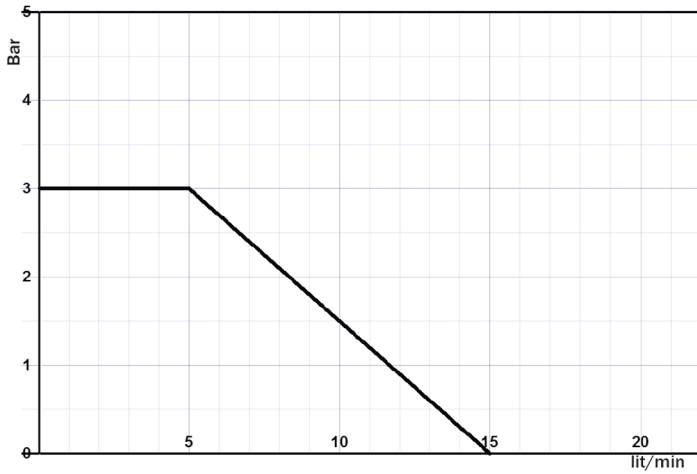
PRODUCT FEATURES

- Ready to plug and play with prefab build-in pump
- Continues water supply
- Compact dimensions with soundproof foam casing
- Energy efficient & silent operation
- Low installation costs
- Equipped with emergency overflow
- Automatic operation
- Water buffer 8 litres
- Connections are KIWA certified to meet the strictest safety standards

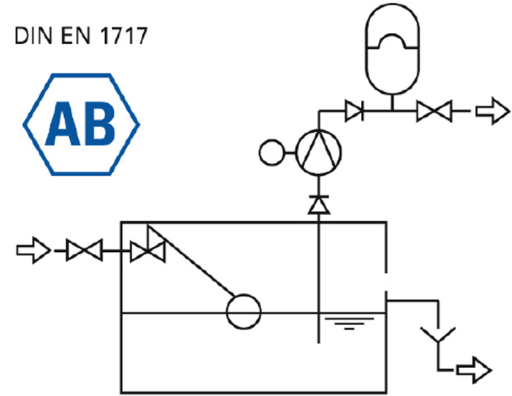


DPT MINI CAT 5

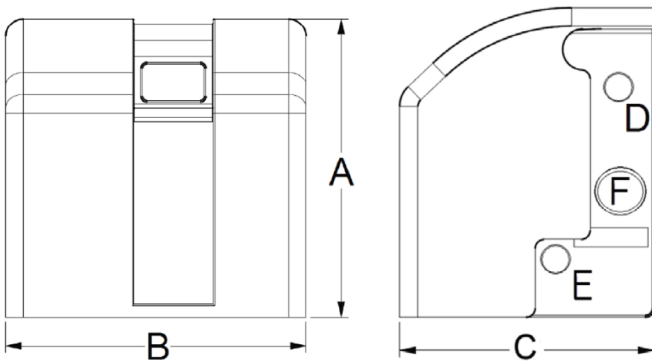
PUMP CURVES



SYSTEM CONNECTIONS



SYSTEM MEASUREMENTS AND TECHNICAL DETAILS



DPT MINI CAT 5 TECHNICAL DETAILS	
PRODUCT AREA	DESCRIPTION
Height A	340mm
Width B	340mm
Depth C	279mm
Drinking Water Supply D	3/4"
Pressure Pipe E	3/4"
Overflow F	40mm
Weight (empty)	6 kg
Volume	8 Litre
Pump Type	Membrane Pump
Switch-off Pressure	3.0 bar
Capacity	900 l/h
Power	Max. 120W
Voltage	230v / 50Hz

DPT