



## **BATTERY ENERGY STORAGE SYSTEM**



### **Lynx Power Bank Ranges:**

- ✓ **LPB-30-60**
- ✓ **LPB-45-45**
- ✓ **LPB-50-100**
- ✓ **LPB-100-200**

*Harvesting Clean Energy / Protecting Our Environment*

## MODEL : LPB-30-60

### BATTERY ENERGY STORAGE SYSTEM



\*Image only for reference

#### Design Standards

LPB is a new range of secure integrated Battery Energy Storage System. This mobile and modular solution includes Batteries, PCS, Control System, HVAC, Fire Protection and optional auxiliary components. It can be connected to an external PV power station, AC generator and grid power. LPB is mainly developed for zero emission and minimal noise. Reducing dependency on grid supply, with improved quality of power, to ensure available consumption during emergency loading.

#### Benefits

- Integrated installation, convenient storage and transportation.
- An efficient, high return on investment.
- Simple operation and easy maintenance.
- Power and Capacity can be expanded.
- Various customization options.

#### Warranty

Battery Performance: 4000 cycles (90% DOD) or 3 years after manufacture;



CE certified



ISO9001:2015  
Quality system certified



ISO14001  
System certified

#### General Information

Model	LPB-30-60
Rated Output Power@25℃	30kW
Rated Output Voltage	400V@50Hz,3ph.
Battery Storage Capacity	61.44kWh
Loading Dimension (L*W*H)	2280*983*2007mm
Weight	1700kg
Operating Temperature Range	0~40℃
Warranty	3 Year Product Warranty, 10 Year Performance Warranty

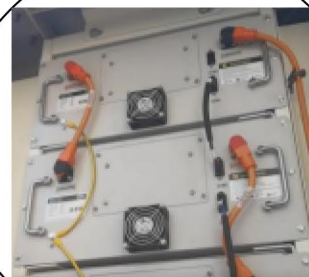
Guaranteed  
by high-quality  
manufacturing  
technology

**LiFePO<sub>4</sub> BATTERY**  
Long Life Design Up to

**6000** cycles

Highest Quality Based on  
Specification Consistency  
of **CELLS~!**

**INTELLIGENT PCS  
with EMS  
SIMPLE USER INTERFACE**



**STANDARD OUTLETS  
CAN BE CUSTOMIZED  
UPON REQUEST**

## Battery

Cell Type	LFP(LiFePO <sub>4</sub> )
Pack Model	MF51100
Pack Capacity	5.12kWh
Pack Rated Voltage	51.2VDC
Cyclic Life	4000(0.5C@90%DOD)
Charger/Discharge Current	50A(0.5C)
Battery Voltage of Cluster	614.4VDC
Connection of Cluster	12S1P

## Inverter&Charger

### DC (battery)

Battery Voltage Range	38 – 66VDC
Maximum current	200A

### AC (on-grid)

AC Input Voltage Range	187-265 Vac
Rated Frequency Range	50Hz/60Hz(±5)
PF	1.0 leading or lagging
AC Connection	Single or Three phase

### AC (off-grid)

Rated Voltage	230Vac(±2%)
Frequency	50Hz(±0.1%)
Cont. output power at 25°C	24kW
Cont. output power at 40°C	19.5kW
Cont. output power at 65°C	13.5kW
Peak power	60kW
Max. Efficiency	96%
Protection Degree	IP21
PowerControl / PowerAssist	Yes
Integrated Transfer switch	Yes
Cooling	Forced Air Cooling
Display	WEB
Communication Port	CAN/RS485
Certificates	EN-IEC 60335-1, EN-IEC 60335-2-29, EN-IEC 62109-1

Cooling System	
Cooling Type	Electric Fan
Operation Mode	Temperature Controlled
EMS	
Display and Monitor	Local Screen/APP/Web
Function	Energy Management and Coordinated Control

Basic Logic:

