

1

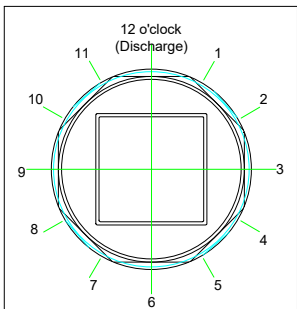
2

3

4

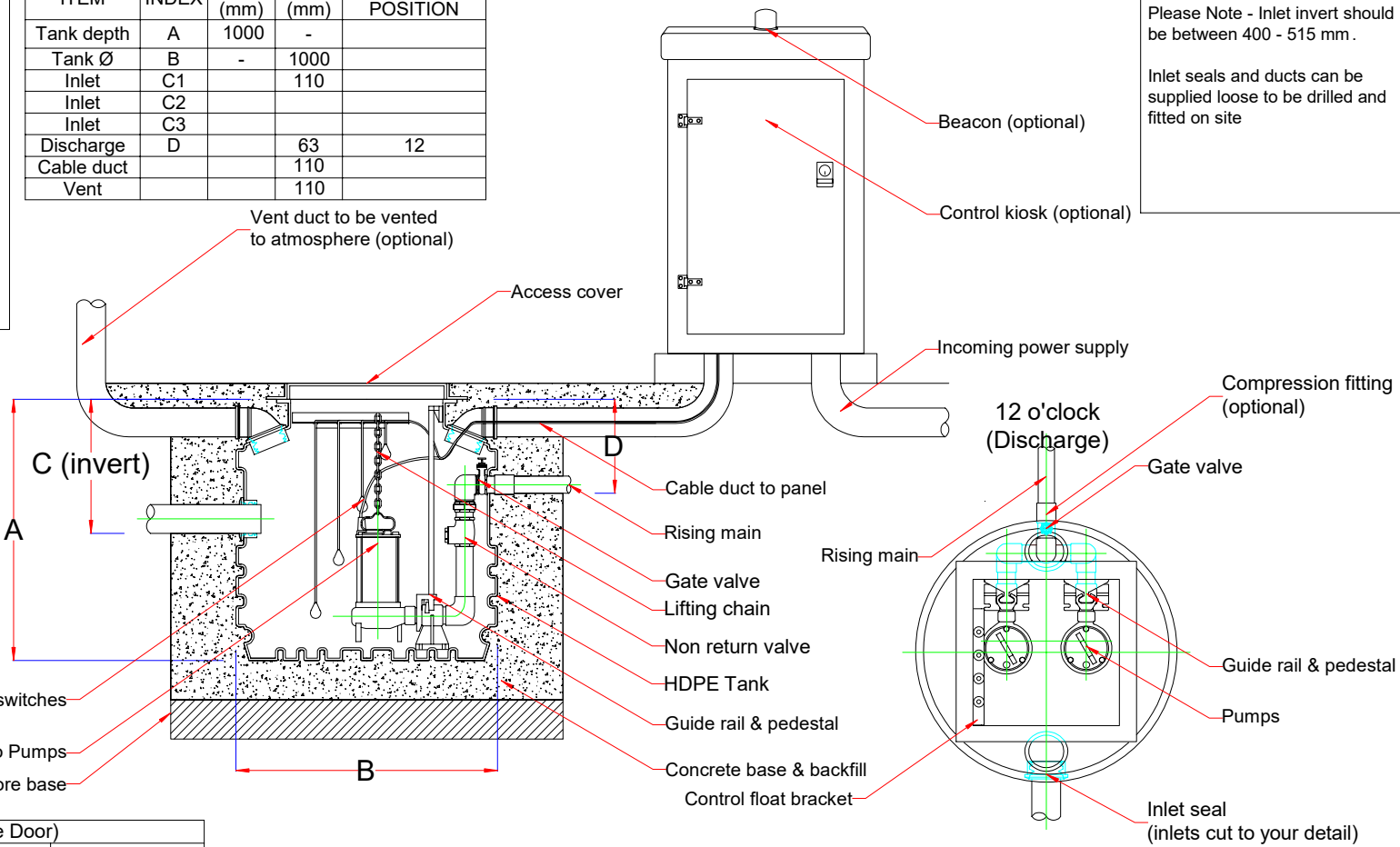
5

6



Fabrication Specifications				
ITEM	INDEX	DEPTH (mm)	DIA. (mm)	CLOCKFACE POSITION
Tank depth	A	1000	-	
Tank Ø	B	-	1000	
Inlet	C1		110	
Inlet	C2			
Inlet	C3			
Discharge	D		63	12
Cable duct			110	
Vent			110	

Comments
Please Note - Inlet invert should be between 400 - 515 mm .
Inlet seals and ducts can be supplied loose to be drilled and fitted on site



Kiosk (Single Door)		
Length (mm)	Width (mm)	Height (mm)
750	400	1250

PLEASE NOTE THAT THIS DOCUMENT MUST BE READ IN CONJUNCTION WITH THE INSTALLATION & OPERATING GUIDELINES

REV	DETAIL	DATE	DRAWN	TITLE
				Twin rigged Ø1000 x 1000 mm typical layout
				CUSTOMER

DRAWING NO	DATE	DRAWN
DPT111098	09/11/2018	gf
THIRD ANGLE PROJECTION		SCALE
		NOT TO SCALE
TOLERANCE +/- 2%		SHEET
		1 of 1
REV		0