

## Energy Management Solutions

AdBlue® Storage & Dispensing  
UK & Ireland

Guarantee\*



# Kingspan BlueMaster® PRO Specification Sheet



The Kingspan BlueMaster range offers a robust and convenient on site storage solution. The range has been specifically designed for the secure storage, dispensing, management and protection of AdBlue®.

All BlueMaster tanks are double skinned for environmental protection and to safeguard against contamination. Kingspan BlueMaster tanks ensure your AdBlue® remains pure for its lifetime in the tank protecting your assets and the environment. This is accomplished in three ways:

### Closed Fluid Path

Manufacturers of AdBlue® agree that the closed controlled systems, like those found in Kingspan BlueMaster tanks, rigorously maintain AdBlue® purity.

### Manufacturing and Material Compliance

All BlueMaster tanks conform to the highest manufacturing and material compliance standards (EN ISO 9001:2015) to deal with the chemical characteristics of AdBlue®.

### Expertise & Knowledge

Kingspan has over 40 years' expert experience in the engineering and manufacturing of liquid storage solutions. Over the past 10 years we have worked with AdBlue® producers to create one of the safest and most environmentally responsible storage solutions available.

### Quality

Quality product and quality service ensure absolute peace of mind. With Kingspan your AdBlue® purity and your vehicles are protected.

### Return on Investment

Onsite bulk storage means you, as an AdBlue® user, benefit from better logistical planning and fleet owners can purchase larger volumes – saving everyone time and money.

### Service

Exceptional customer service is our top priority which is why we offer full technical and after-sales support, a trustworthy 10 year guarantee\*.

\*10 year warranty applies to tank only.



kingspan.com



## Energy Management Solutions

AdBlue® Storage & Dispensing  
UK & Ireland

# Kingspan BlueMaster® PRO Tank Range

The BlueMaster PRO Tank range, our highest specification of dispensing system complete with the Watchman Access advanced fleet management system. This plug and play technology offers numerous features and benefits allowing businesses to manage their tank levels and monitor vehicle and driver usage of AdBlue remotely over the cloud.

## Technical Specifications

### Specifications

Double Skinned Tank

Submersible Pump

2" Stainless Steel Dry Coupling Connection

Watchman Access Tank Management System -  
Starter pack inc. 40 RFID Cards, 40 RFID Key Fobs and RFID Card Reader

Piusi Automatic Dispensing Nozzle with nozzle holder pump switch

3/4" EPDM Delivery Hose (6m on 2500L and 8m on 5000L Vertical & Slimline and 9000L)

Flowmeter

Prepared for Kingspan WAP Telemetry

### Optional Extras

Tank fitted with Kingspan WAP Telemetry

Elaflex ZVA Automatic Dispensing Nozzle

Elaflex LV ZVA Automatic Dispensing Nozzle

Hose Reel (not available on 2500L)

Pack of 10 RFID Cards & Key Fobs

Roaming SIM Card\*\*\*

Product Dimensions	Length (mm)	Width (mm)	Height (mm)
2500L	2460	1460	1950
5000L Vertical	2850	2250	2350
5000L Slimline	3900	1150	2340
9000L	3280	2480	2950

We take every care to ensure that the information in this document is accurate at the point of publication. Dimensions may vary within a small parameter due to manufacturing process variations or environmental conditions. All images are for illustration purposes only and, along with dimensions, should not be taken as binding. The actual product may vary and aspects such as equipment specification/colour may differ. To ensure you are viewing the most recent and accurate product information, please visit <https://www.kingspan.com>  
©Kingspan and the Lion Device are Registered Trademarks of the Kingspan Group in the UK, Ireland and other countries. All rights reserved. Registered in Country No.NI017631. Registered Office: 180 Gilford Road, Portadown, Co. Armagh, BT635LF. VAT GB412 5124 03



### Watchman Access Key

#### Features:

- Registration of AdBlue quantity delivered to each user/vehicle
- Built-in database for unlimited users/vehicles
- Identification with unique RFID swipe cards and/or key Fobs
- Real time user database update with mobile networks, tank can be situated in any location
- Two-level authentication\*\*
- Location update via built-in GPS
- AdBlue leakage and sudden drop alert
- Reports

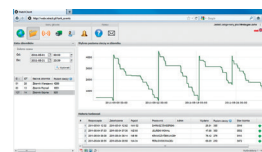
\*\* One level authorisation also available.

\*\*\*SIM card has a 5 year contract built into price of tank.

\*\*\*\*Watchman Access is for customer's own use and not suitable for resale as is not 'weights & measures' approved.



Kingspan Connect Dashboard sample



Kingspan Connect sample report

